

FOLLOW UP



REMEMBER TO REPORT **SUSPICIOUS ACTIVITY ON-COUNTRY**

EXAMPLES:

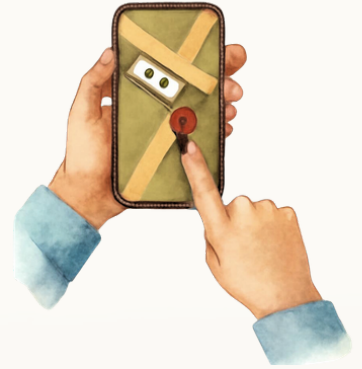
- TRACK/LAND CLEARING/DRILLING THAT DOESN'T SEEM RIGHT
- WASTE PRODUCTS IN WATERWAYS
- DAMAGE TO HERITAGE SITES
- WORK IN CLOSE PROXIMITY TO HERITAGE SITES

WHAT TO DO BEFORE CONTACTING THE OFFICE:

SOME ACTIVITIES ARE DANGEROUS. FOR YOUR SAFETY, OBSERVE FROM A DISTANCE!

If possible:

- **Take photos of**
 - The activity
 - Any vehicles
 - The surrounding landscape
- **Record details**
 - Vehicle type, colour, company name or logos (if visible)
 - GPS location or turn on location services on your phone
 - Nearby landmarks or reference points
 - Distance from the nearest town
 - Type of disturbance (clearing, drilling, tracks, waste, etc.)



 **Tip:**

Turn on your phone's location services and take a photo. This captures both visual evidence and the location.

IF SOMETHING DOESN'T LOOK RIGHT



CALL (08) 6146 2503

let us know.